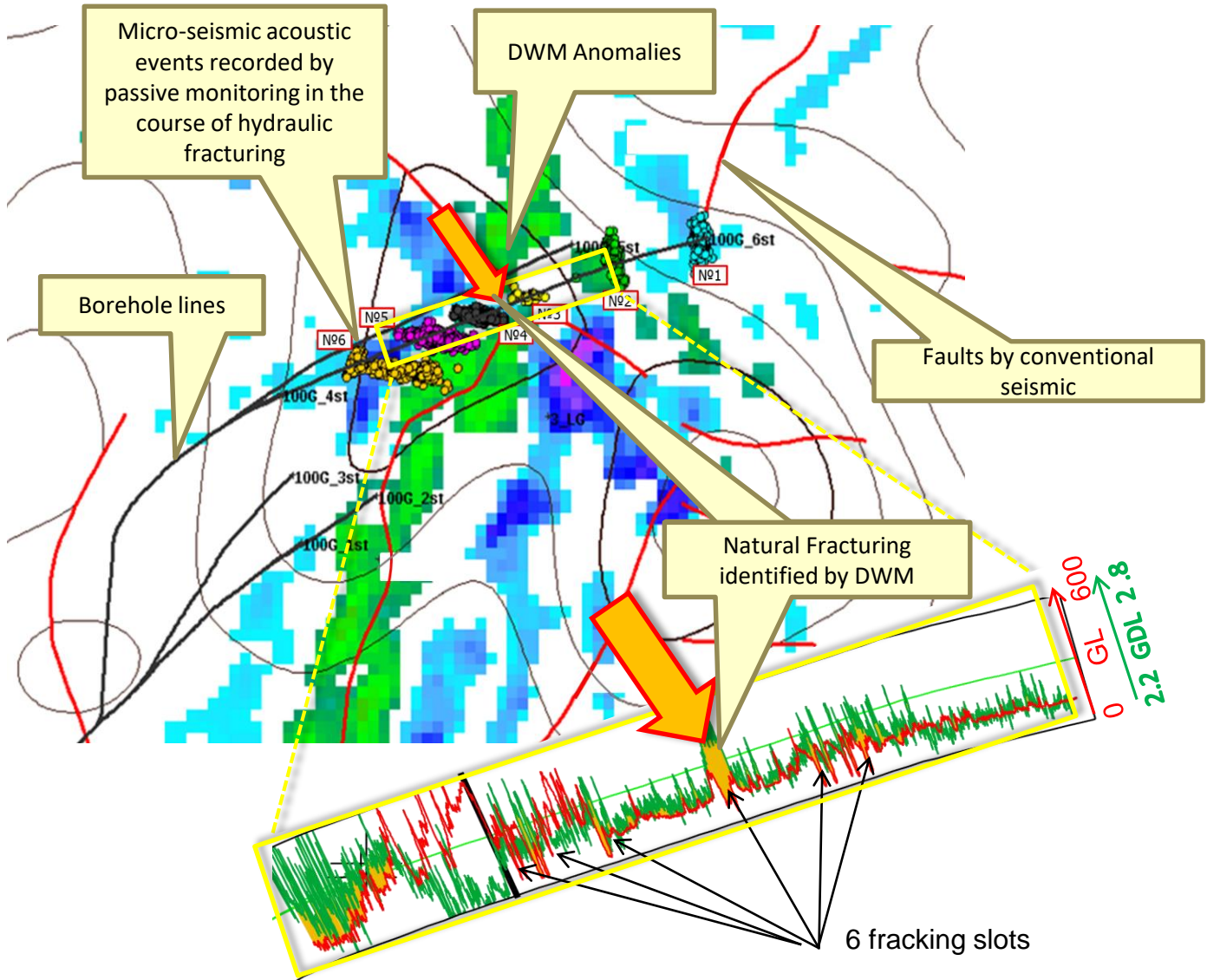


Duplex Wave Migration for optimizing of Fracking Operations



- ✓ The performed analysis shows that the major inflow to the well is related to the natural fracturing itself (150 m³/day, shown with arrow) , which was identified with Duplex Waves Migration (DWM)
- ✓ Each separate artificial fracture created during hydraulic fracturing gives maximum 5 m³/day flow
- ✓ Total yield recorded in the well was 175 m³/day



member of TETRALE Group www.tetrale.com

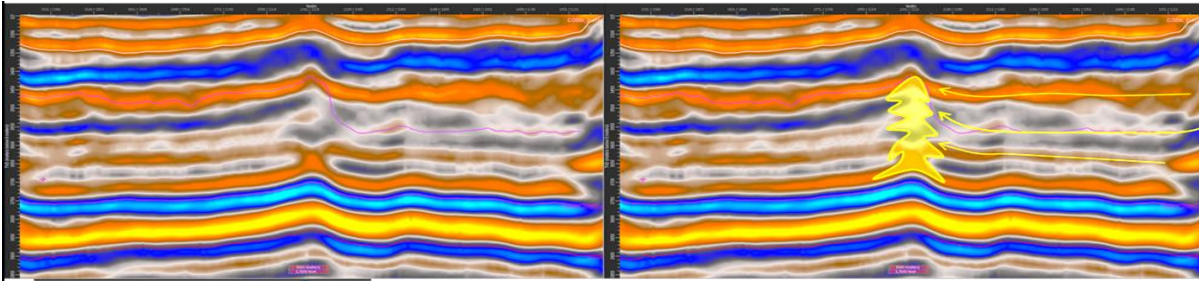
[t] +1 403 457-0555 www.tetriseis.com

Contact us at: sales@tetrale.com

Duplex Wave Migration for Detecting Reefs of Small size that may remain undetected at conventional seismic processing

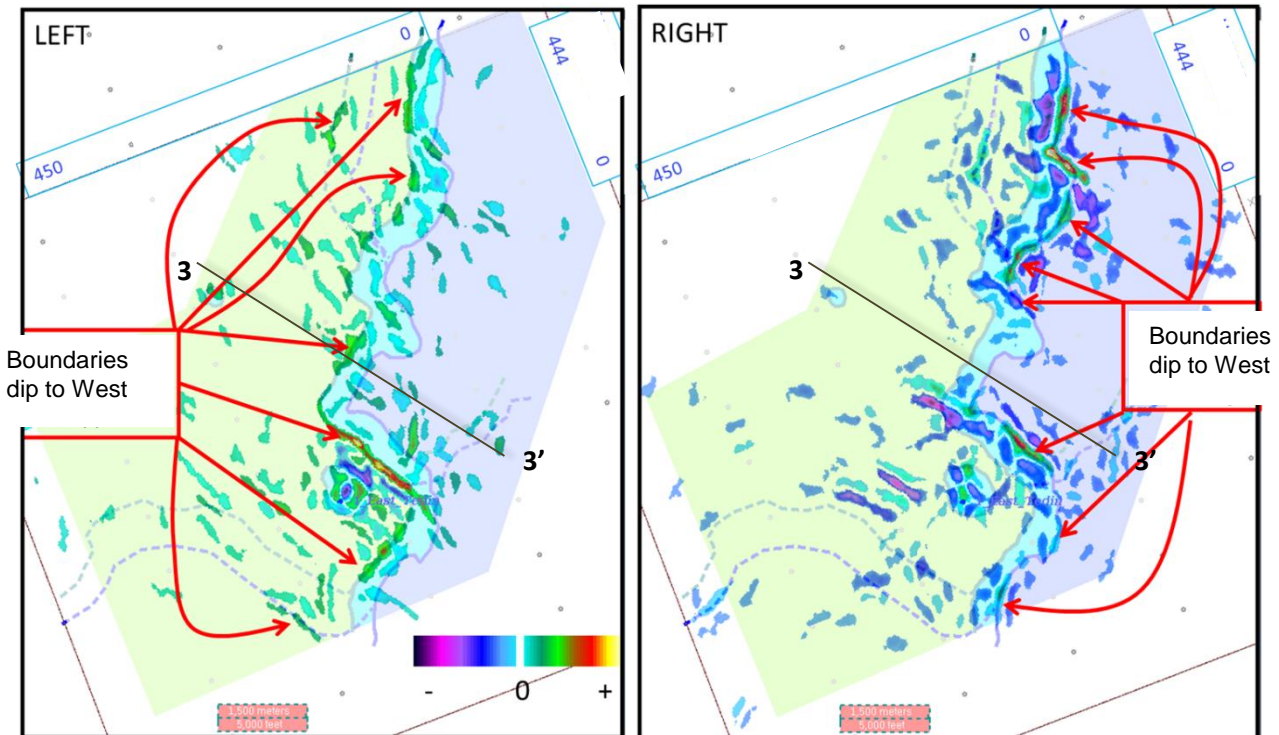
Cross-section by arbitrary line 3-3'

Same with elements of interpretation



Conventional seismic depth cross-section along the line 3-3' without and with elements of interpretation

Duplex waves that come only from one side of the target object are summed in the produced partial azimuthal DWM cubes



Comparison of seismic formation map with maps of DWM amplitudes (overplayed) obtained with LEFT apertures (dipping to the south-west-west), RIGHT (dip to the north-east-east)

[t] +1 403 457-0555 www.tetraseis.com



Contact us at: sales@tetrale.com